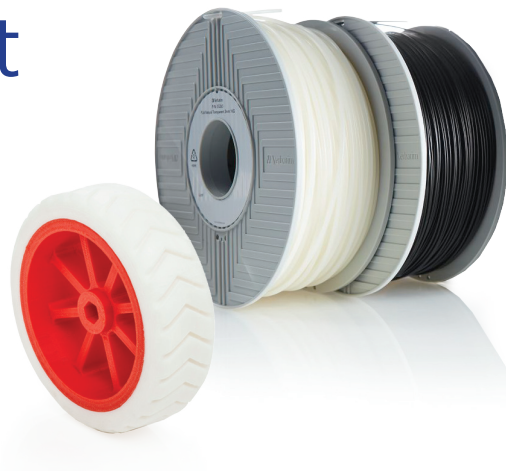




# PRIMALLOY™ Filament

- High performance thermoplastic polyester elastomer (TPE) for material extrusion (ME)
- Highly flexible
- Resistant to oil, grease, abrasion and solvents
- Good shape retention
- Main applications: Flexible items such as window seals, grips, holders, plugs, robot parts and protective components.



## Filament Specifications

Size	Ø tolerance	Length
1.75mm	± 0.05mm	190 m
2.85mm	± 0.05mm	71 m

## Material properties

Description	Test method	Typical value
Density	ISO 1183	1.09 g/cm
Melt flow rate (230°C, 21.2N)	ISO 1133	45 g/10min
Melt temperature		175 - 195°C
Tensile strength	ISO 37	14 Mpa
Tensile elongation	ISO 37	900 %
Durometer hardness	ISO 7619	Shore A85





## Recommended printer set up

Extrusion temperature	210-240°C
Bed temperature	60°C
Printing speed	20 mm/s



# PRIMALLOY™ Filament

## Filaments Available

Colour	Part Number		PANTONE® ref.*	Diameter	Weight
Natural White	55500		N/A	1.75 mm	500 g
Black	55506		Black Process	1.75 mm	500 g
Natural White	55501		N/A	2.85 mm	500 g
Black	55507		Black Process	2.85 mm	500 g

\* Closest PANTONE® colour reference

Verbatim filament is manufactured from high quality materials to extremely rigid standards. The filaments are manufactured from the highest quality materials and produced to extremely tight tolerances to ensure consistent feed and stable printing. The filaments are distributed in vacuum-sealed bags with desiccant, and wound onto a custom spool that has been designed for strength, uniform dynamic performance and trouble-free dispensing.

